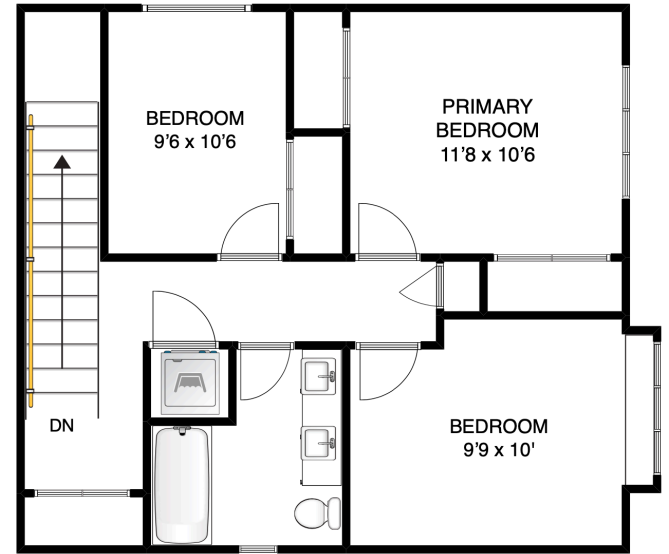
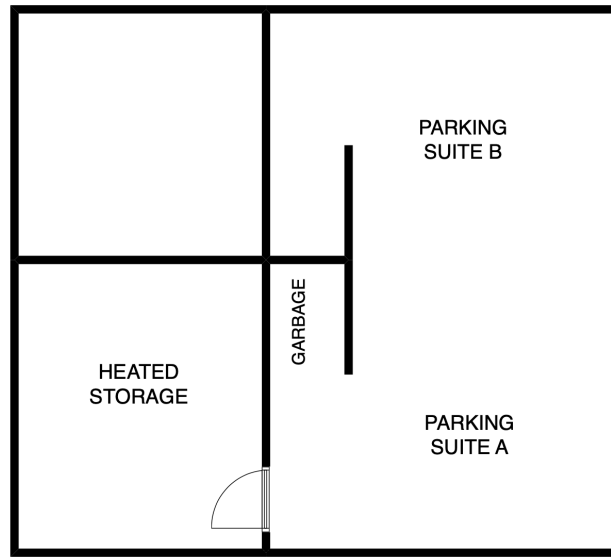


MAIN FLOOR



UPPER FLOOR



CARPORT



**FRANCES FROST**  
 PERSONAL REAL ESTATE CORPORATION  
[bowenislandrealestate.info](http://bowenislandrealestate.info)  
 604.947.9090  
 #3 - 479 Bowen Trunk Rd.  
 Bowen Island

ADDRESS

**1112 FOXGLOVE LANE  
 BOWEN ISLAND  
 BC  
 V0N 1G1**

AREA CALCULATION

MAIN FLOOR:	722 sq ft
UPPER FLOOR:	598 sq ft
<b>TOTAL FINISHED SQFT:</b>	<b>1320 sq ft</b>
UNFINISHED STORAGE:	145 sq ft
<b>TOTAL UNFINISHED SQFT:</b>	<b>145 sqft</b>
MAIN FLOOR DECK:	215 sq ft

NOTES

FLOOR PLAN MEASUREMENTS, DIMENSIONS, SQUARE FOOTAGE, EXISTING STRUCTURES & FEATURES ARE APPROXIMATIONS AND FOR ILLUSTRATIVE PURPOSES ONLY. WE MAKE NO GUARANTEE, EXPRESSED OR IMPLIED, AS TO THE ACCURACY AND COMPLETENESS OF THIS RENDERING.