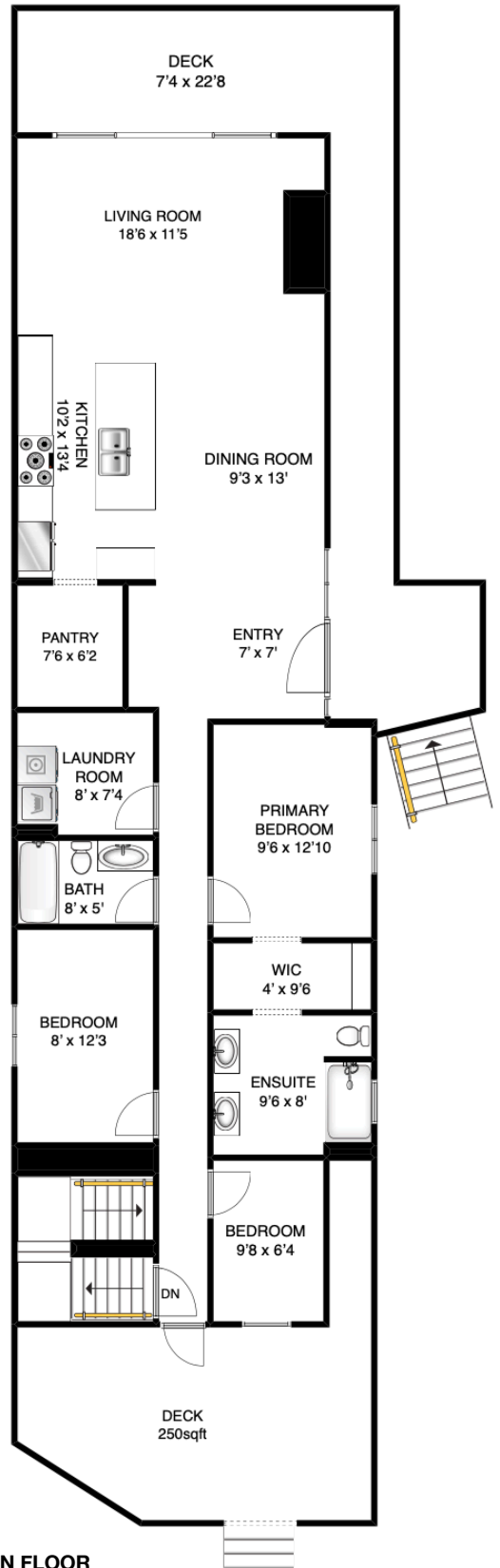


LOWER FLOOR



MAIN FLOOR



FRANCES FROST
 PERSONAL REAL ESTATE CORPORATION
 bowenislandrealestate.info
 604.947.9090
 #3 - 479 Bowen Trunk Rd.
 Bowen Island

ADDRESS
1294 MILLER ROAD

BOWEN ISLAND
BC

V0N 1G1

AREA
CALCULATION

MAIN FLOOR:	1350 sq ft
LOWER FLOOR:	680 sq ft
TOTAL AREA SQFT:	2030 sq ft
DECKS:	590 sq ft

NOTES

FLOOR PLAN MEASUREMENTS, DIMENSIONS, SQUARE FOOTAGE, EXISTING STRUCTURES & FEATURES ARE APPROXIMATIONS AND FOR ILLUSTRATIVE PURPOSES ONLY. WE MAKE NO GUARANTEE, EXPRESSED OR IMPLIED, AS TO THE ACCURACY AND COMPLETENESS OF THIS RENDERING.