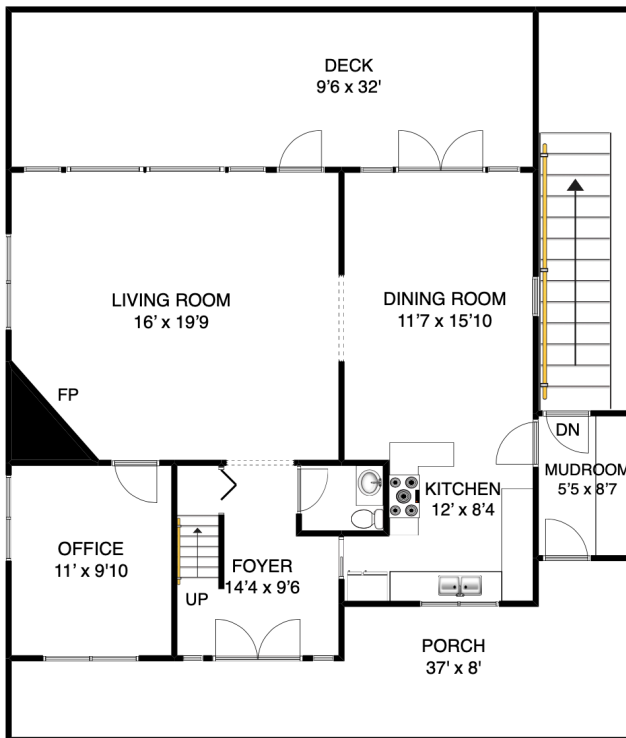
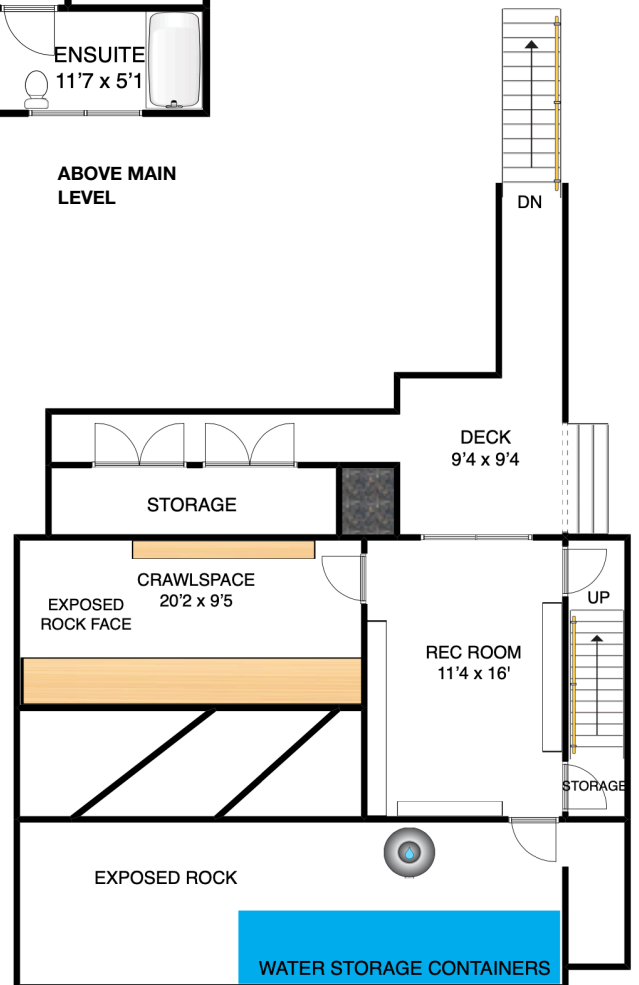


ABOVE MAIN LEVEL



MAIN LEVEL



BASEMENT



THE BOWEN ISLAND
REAL ESTATE GROUP
FRANCES FROST
PERSONAL REAL ESTATE CORPORATION
bowenlandrealestate.info
604.947.9090
#3 - 479 Bowen Trunk Rd.
Bowen Island

ADDRESS
**1424 EAGLE CLIFF
BOWEN ISLAND
BC
VON 1G1**

AREA CALCULATION

MAIN LEVEL:	1022 sqft
ABOVE MAIN LEVEL:	838 sqft
BASEMENT:	175 sqft
TOTAL FINISHED SQFT:	2035 sqft
TOTAL UNFINISHED SQFT:	550 sqft

NOTES

FLOOR PLAN MEASUREMENTS, DIMENSIONS, SQUARE FOOTAGE, EXISTING STRUCTURES & FEATURES ARE APPROXIMATIONS AND FOR ILLUSTRATIVE PURPOSES ONLY. WE MAKE NO GUARANTEE, EXPRESSED OR IMPLIED, AS TO THE ACCURACY AND COMPLETENESS OF THIS RENDERING.