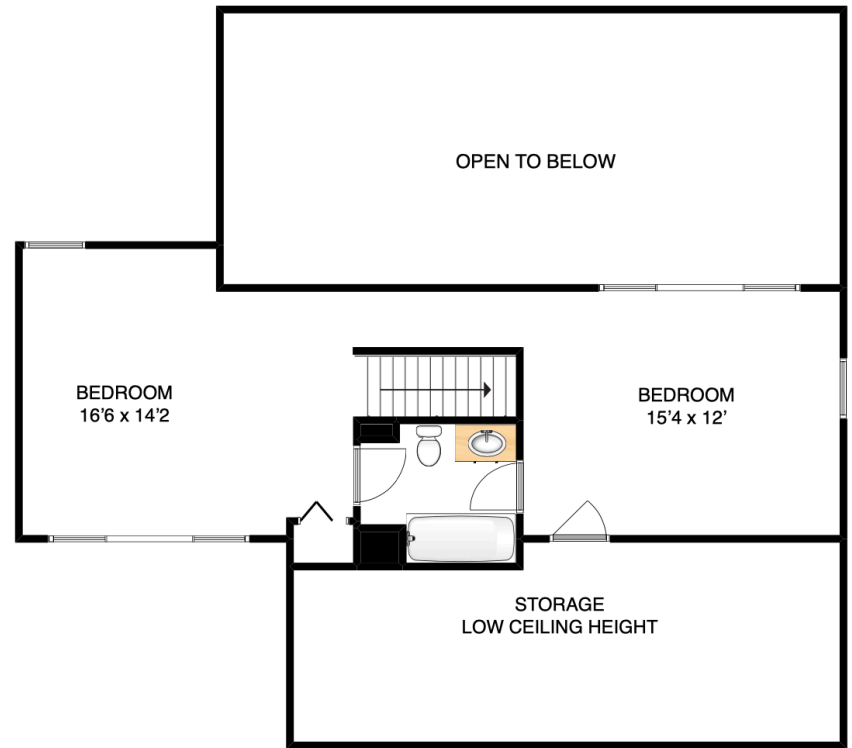


MAIN FLOOR



UPPER FLOOR



**Frances Frost**  
REALTOR \*



Remax Crest - Bowen Island  
Office : 604.947.9096  
Cell : 604.657.0660

Top 10% of Realtors in the GVRD

[www.bowenislandrealestate.info](http://www.bowenislandrealestate.info)

Personal Real Estate Corporation

**ADDRESS**

**1591 OLD EAGLECLIFF RD  
BOWEN ISLAND  
V0N 1G1**

**AREA CALCULATION**

MAIN FLOOR	960 sq ft
UPPER FLOOR	515 sq ft
<b>TOTAL LIVING AREA</b>	<b>1475 sq ft</b>
STORAGE	190 sq ft
FRONT DECK	400 sq ft
SIDE DECK	60 sq ft

**NOTES**

FLOOR PLAN MEASUREMENTS, DIMENSIONS, SQUARE FOOTAGE, EXISTING STRUCTURES & FEATURES ARE APPROXIMATIONS AND FOR ILLUSTRATIVE PURPOSES ONLY. WE MAKE NO GUARANTEE, EXPRESSED OR IMPLIED, AS TO THE ACCURACY AND COMPLETENESS OF THIS RENDERING.