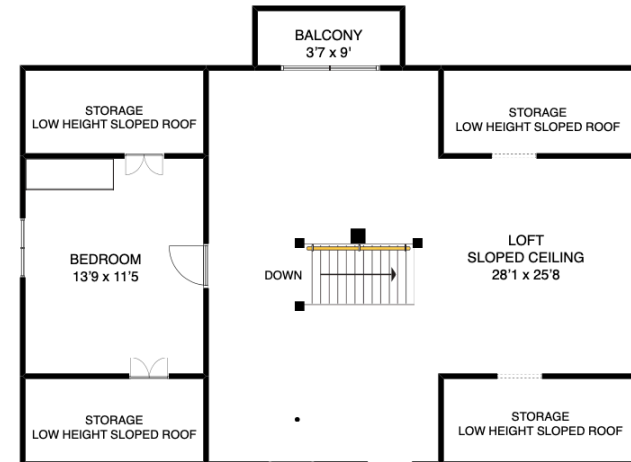


LOWER FLOOR



LOFT



Frances Frost
Personal Real Estate Corporation
604.657.0660
RE/MAX Crest Realty - Bowen Island
#3 - 479 Bowen Trunk Rd. V0N 1G1
www.bowenislandrealestate.info

ADDRESS

**239 DAVID ROAD
BOWEN ISLAND
V0N 1G1**

AREA CALCULATION

MAIN FLOOR	1200 sq ft
LOWER FLOOR	1180 sq ft
LOFT	850 sq ft
TOTAL LIVING AREA	3230 sq ft
UNFINISHED STORAGE	280 sq ft
MAIN FLOOR DECK	1220 sq ft
LOWER DECK	250 sq ft
LOFT BALCONY	33 sq ft

NOTES

FLOOR PLAN MEASUREMENTS, DIMENSIONS, SQUARE FOOTAGE, EXISTING STRUCTURES & FEATURES ARE APPROXIMATIONS AND FOR ILLUSTRATIVE PURPOSES ONLY. WE MAKE NO GUARANTEE, EXPRESSED OR IMPLIED, AS TO THE ACCURACY AND COMPLETENESS OF THIS RENDERING.